

Microsoft Partner
Silver Application Development

Simplify your test process by using CIM FlexStand Operator Interface

Using National Instruments TestStand as your Test Administrator is the for most test applications the right choice. But when deploying the test environment in the production, you want to use a simple Operator Interface, that can scale depending on factors like test, graphical representation, operator language and ...

Some of the statements, we have experienced from many years in the test business are:

- “I am a beginner in TestStand and I find the default editor very complicated”
- “A full TestStand solution is too expensive for my budget”
- “TestStand is too complex for my current test needs”
- “I want a simple sequencer solution for my production line where I can edit and debug my sequences on the production line.”

This is why CIM.AS created FlexSTAND

FlexStand Operator Interface is a flexible graphical operator interface for NI TestStand. It provides a user-friendly platform to build your own custom TestStand operator interface, using the easy-to-use LabVIEW environment. Only basic LabVIEW and TestStand skills are required.

FLEXSTAND OI has been awarded Add-on of the Year 2011 by National Instruments.

FLEXSTAND OI is a Gold product. This is to products and software which has undergone an external authentication with the highest quality.

Office Addresses:

CIM A/S
Jegstrupvej 96A
8361 Hasselager
Denmark

CIM A/S
Agern Allé 3
2970 Hørsholm
Denmark

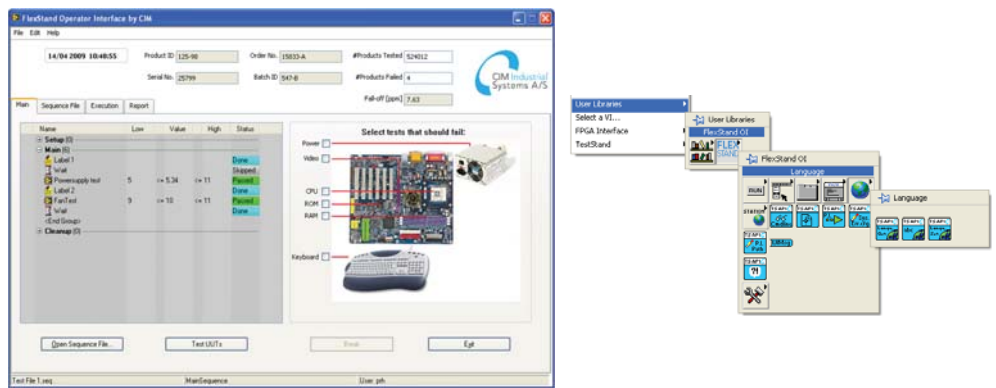
CIM A/S
Storegade 82
6430 Nordborg
Denmark

Administration Address:

CIM A/S
Fælledvej 17
7600 Struer
Denmark



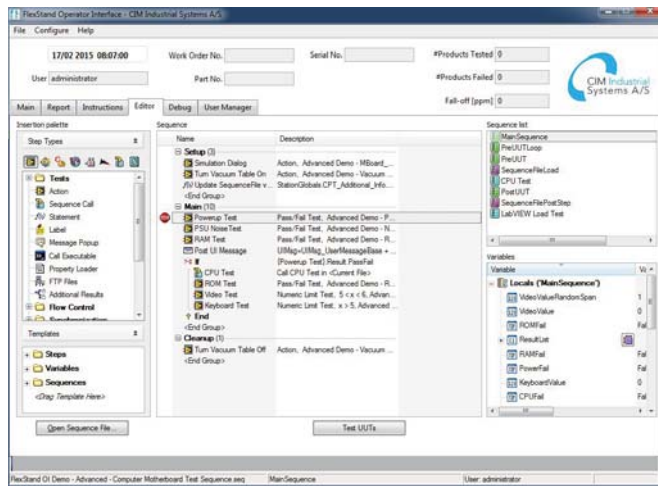
FLEXSTAND Operator Interface



FLEXIBLE and SCALABLE

By using FlexStand, you can create simple or advanced operator interfaces for TestStand using only basic LabView programming. Through its plugin architecture, you can change the behavior and look during the test, e.g. when a barcode is scanned. A number of tabs can be changed automatically so the operator receives the desired information based on the specific situation.

A specially designed interface (API) hides all the complex TestStand properties and methods that usually make the task of creating operator interfaces hard. FlexStand integrates fully into the LabView development environment including a tools palette and examples.



EDITOR Functionality

As of version 8.0, the FLEXSTAND developer Team has added an editor functionality. The new editor has all the common sequence editing functions available but has the more advanced functions hidden. This makes the editor a perfect choice for TestStand beginners or for skilled users who want to edit and debug sequences directly from the operator interface on the test station. A new redesigned debug interface completes the editor functionality for debugging sequences, setting breakpoints and watching variables during execution.

Visit CIM.AS
 Download **FLEXSTAND**
 30 days trail version available
 Download user guide
 Read Use cases
 Request further information